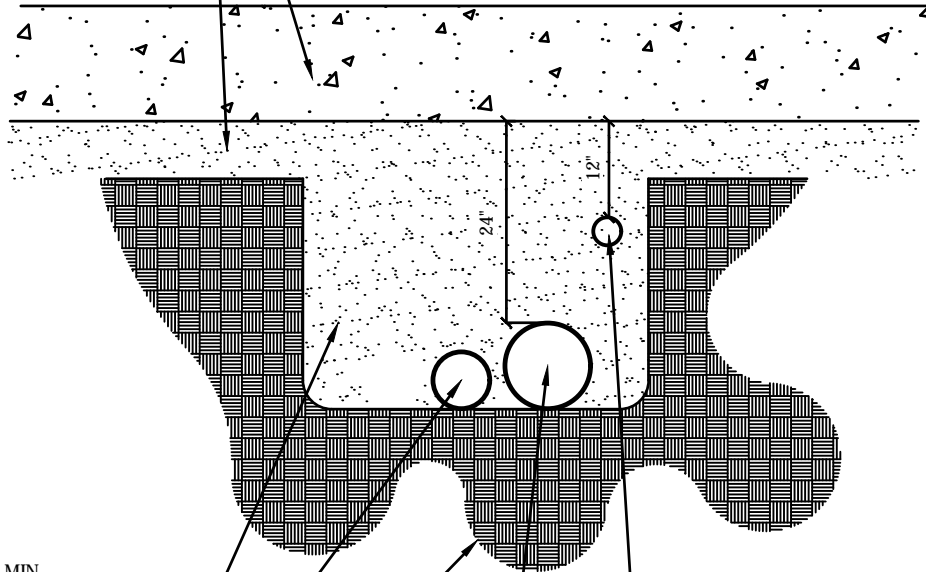


PEDESTRIAN WALK
 BASE MATERIAL PER
 CIVIL DRAWINGS.



BACKFILL: 95% MIN.
 COMPACTION TYPE 11
 BASE OR SAND.

ELECTRICAL SLEEVE
 3" SCHED 40 PVC

NATIVE SOIL

1 1/2" SCHED 40 PVC FOR
 1" IRRIGATION LATERAL LINE
 AT ASPHALT CROSSING, PROVIDE
 4" SLEEVE W/ AN ADDITIONAL
 1 1/2" SCHED 40 SPARE CONDUIT

6" SCHEDULE 40 PVC SLEEVE
 PROVIDED FOR 1.5" WATER MAINLINE
 AND ADDITIONAL 2" SPARE CONDUIT

NOTE:

1. USE 7-25 WET DRY GLUE FOR PVC AND PRIMER
2. USE SCHEDULE 80 FITTINGS.

***** (SEE SPECIFIC DESIGNED SIZE FOR EACH INDIVIDUAL PROJECT)

6 SLEEVE TRENCHING DETAIL
 SCALE: NTS

DEPARTMENT OF PUBLIC WORKS



STANDARD DETAIL

DATE: 6/18/19

DRAWN BY: LJPC

SHEET: 1 OF 1

PROWAG AND
 DOWNTOWN PROJECTS

SLEEVE TRENCHING DETAIL